

# Introduction

## CD Box Labeler Pro

© 1996-1999 Green Point Software UK Ltd

CD Box Labeler Pro is an easy to use labeler program for CD, tray inserts, zip & floppy labels. This program is easy to use, and most options should be self explained. If you are unsure about something please look in the "How To.. section" in this help file,

CD Box Labeler Pro is an easy to use labeler program for your CD Jewel Case & CD Labels. You can edit text, insert images, select colors to suite your needs. CD Box Labeler have utilities that helps you read the contents of the CD's and a wizard that helps you with the creation of label without need to learn the most advanced options of the program. CD Box Labeler Pro has the ability to scan, rotate, and flip images, and a selection of filter effects to help you alter the images.

CD Box Labeler Pro also supports premade labels like Stomper, Neato, PressIt etc. lets you continue use all your favorite labels in one easy to use label program, CD Box Labeler Pro is simply the most easy to use label program for all your label needs.

**Note!** This version is ad supported, it will never expire if you don't register, instead are ads displayed when you use this software. You can still register to the full registered version without ads. Please visit [www.gpssoftuk.com](http://www.gpssoftuk.com) for more info!

Please see the [register](#) section on how to register and all register options available.

Green Point Software UK Ltd  
P.O. Box 18530  
London E11 4FW  
United Kingdom  
[www.gpssoftuk.com](http://www.gpssoftuk.com)

## Support

If you need help with CD Box Labeler Pro please visit [our support page on the net](#). This will answer most of your questions.

If that doesn't answer your questions please feel free to [e-mail the support](#).

### **Note!**

Before you contact us, be sure that you are using the latest version of CD Box Labeler Pro, since your problem may already be solved in a newer version.

## Known Issues

Stomper, Zweckform, Neato, Press It, Traxdata, Boeder, Avery, Boma, 3T & Windows are registered trademarks of their respective owners.

## IMPORTANT CALIBRATE PRINTER

Be sure to calibrate the printer before you print for the first time, the calibration can be don in the Set Options Dialog in CD Box Labeler Pro.

Click [here](#) on help to calibrate!

NOTE! You don't need this if you only print on plain paper!

## Important Info On Premade Labels

### **Are you missing your favorite label?**

Please e-mail us an offer to send us (2) copies of that label, we will then contact you with the address to send it if we do not have that label. We will then do our best to include the label into the next version of CD Box Labeler Pro.

E-mail to: [support@gpssoftuk.com](mailto:support@gpssoftuk.com)

Note! You can still use your label (CD-Label), simply calibrate one of the "Custom CD-Labels" in the program.

### **Note1:**

We have been aware of that there exist "pirate made" labels of premade made labels. Our suggestion is; always use original labels since many "pirate made" labels are poorly made, both size and alignment of the labels can differ from label to label.

### **Note2:**

Some companies change the alignment of the labels from time to time; it's almost impossible to know when this is done. In most cases are the alignments of the labels changed, and a recalibration is the only thing you have to do. But in some cases are the labels layout changed (like Zweckform), if you notice this on any label. Please e-mail us an offer to send us (2) copies of that label, we will then contact you with the address to send it if we do not have that label. We will then do our best to include the label into the next version of CD Box Labeler Pro.

## Register

**Online Credit Card orders using our secure order form!**

Press this link to order online: [Online Order Page](#)

**Price Info!**

For current prices and order options please visit [www.gpssoftuk.com](http://www.gpssoftuk.com)

**Mail Order!**

Please fill in the [Mail Order Form](#)

If you have any sales questions or OEM requests please contact [sales@gpssoftuk.com](mailto:sales@gpssoftuk.com)

## Register

**Online Credit Card orders using our secure order form!**

Press this link to order online: [Online Order Page](#)

**Price Info!**

For current prices and order options please visit [www.gpssoftuk.com](http://www.gpssoftuk.com)

**Mail Order!**

Please fill in the [Mail Order Form](#)

If you have any sales questions or OEM requests please contact [sales@gpssoftuk.com](mailto:sales@gpssoftuk.com)

## Mail Order Form

Please visit [www.gpssoftuk.com](http://www.gpssoftuk.com) for the mail order form.



## **New/Chages in CD Box Labeler Pro**

Please look in the changes.txt file where you installed CD Box Labeler Pro

## License


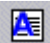


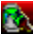




Please read the license.txt file in the installation folder!

## How To Make a Label

CD Box Labeler Pro supports the ability to make a label for the CD (a premade label from Stomper, Neato, Zweckform etc. is needed) aswell as premade J-Cards and Tray Cards.

This is the basic function on how to make a label, to use the more advanced functions as add circles, more pictures, text-boxes etc. look in the how-to.. section.

To create a Label please folow these steps.

1. Start a new project
2. Press the label you want to edit (Front, Inside, Back, CD Label) in the "View"-Navigation Bar.
3. Press the Edit-Text icon on the toolbar .
4. Edit the index for the CD.
5. Close the Text-Editor to go back to the labels layout, press this icon again .
6. If you edit the Back Label edit the CD Name(spine text) by pressing this Icon .
6. If you want to change the background color press the Background Color icon  or .
7. If you want to add a background image press the Load Background Image icon .  
Note! this image will stretch itself over the whole label (except for the back-side, this can be stretched over the spines with the  button). If you want to add more pictures or pictures that should not be stretched over the whole label; press this button  and select the are where the picture shuld be loade into(the picture can be manual stretched later).
8. Load your printer with the label(or plain paper) you want to print to the press the print icon  and select the label type to print.


**Note!** Be sure to calibrate the printer in the Set Options dialog before you print to a premade label.

## How To Add Text Box Object


Press this button  on the "ToolBox".

When the Text Box Dialog opens, simply add the text & font properties and press the OK button when finished.

## How To Load Background Image

1. Press the Load Background Image icon on the toolbar 
2. Select the image you want to load in the dialog box and press Open.  
The image is automatic stretched to fit if the label.

### **Note!**

If you want to load multiple images that can be manually stretched & mooved on the label, press this  icon instead and select where on the label you want the image.

## How To Make A Floppy Or Zip Label

Select the "Floppy/Zip Label Tool" in the "Tools Menu".

When the Floppy/Zip Label Dialog opens. Edit the text as in any rich text editor(as word etc.).

**Note!**

You must save/print the Floppy/Zip Label in this dialog, this is because Floppy/Zip Labels are separate from the rest of the program.

## How To Navigate Trough Labels

CD Box Labeler Pro use a View-Navigation bars to select between labels.




Simply press one of the icons to edit the labels.

I.E. If you press "Front Label", then everything you do like; Load Images, Edit Text, Change Colors etc will be done into the Front Label Layout.

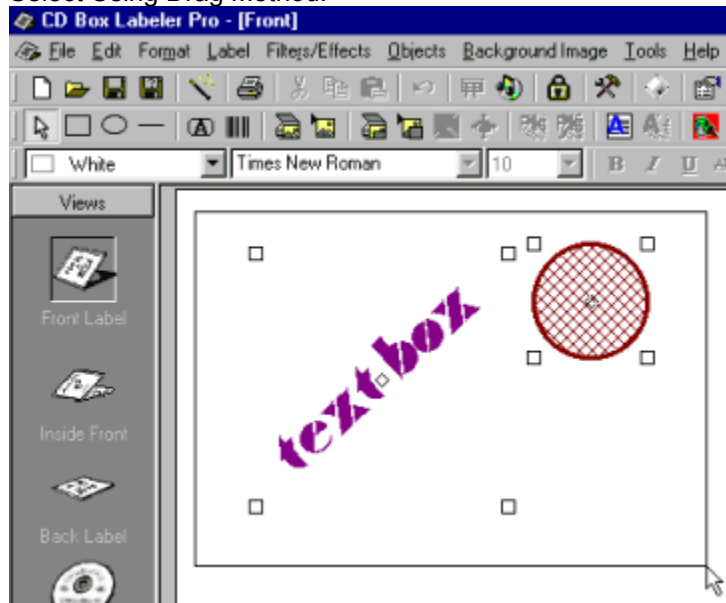
## How To Select/Unselect & Move Objects

It's easy to select/unselect & move objects.

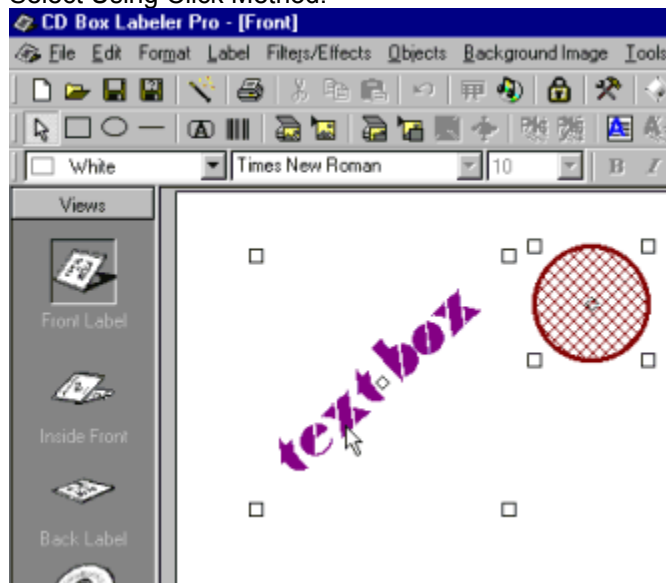
### Select Object:

1. Press this button in the ToolBox  (all current selected object will be unselected).
2. Either press and drag on the label, or click on the objects to select(Hold shift to select multiple objects).


### Select Using Drag Method:




### Select Using Click Method:



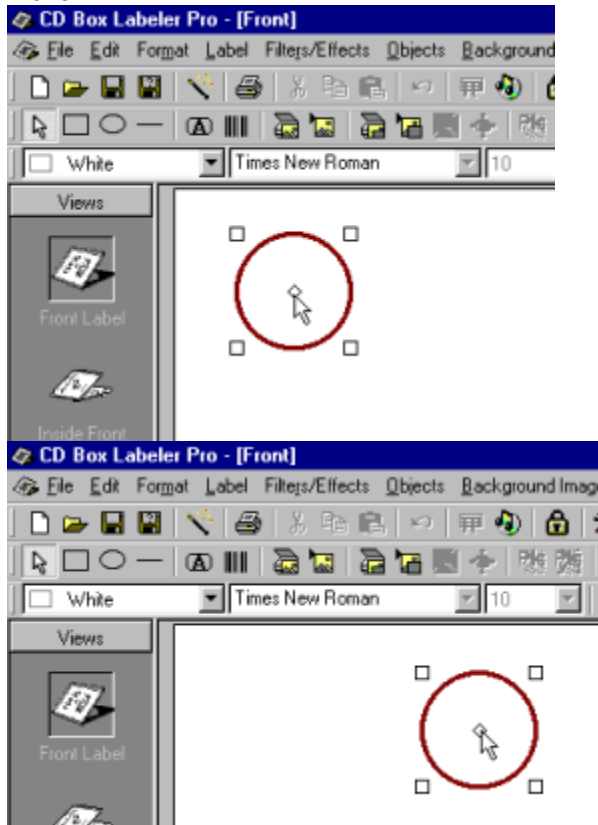
### Move Objects:

1. Select the object
2. Press the rectangle (  ) on the object and hold the mouse to drag the objects.



You can also lock an object by pressing this button .

Move:

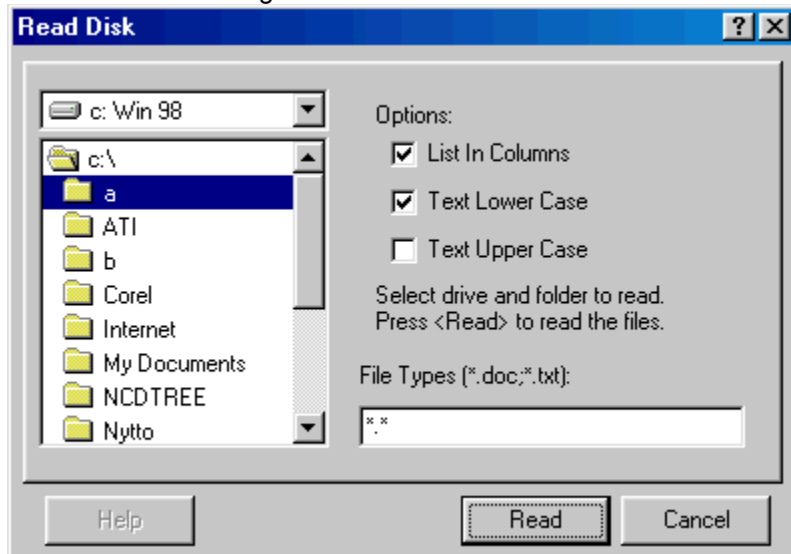


## How To Read Files

1. Make sure you are in the Edit-Text Layout, if not press this icon 

2. Press the Read Files Icon on the toolbar 

You will see this dialog:



Select the Drive, Options & Filter types when finished press Read.

### Read Disk Options:


Filter type: File types to read, \*.exe;\*.txt reads only files with the fileextension exe & txt.

List In Columns: List the files in columns

Upper or Lower Case: List the files in Upper or Lower Case(leave unchecked to use as it is original saved).

CD Box Labeler Pro will automatic add the contents of the disk and return to the Edit-Text Layout.

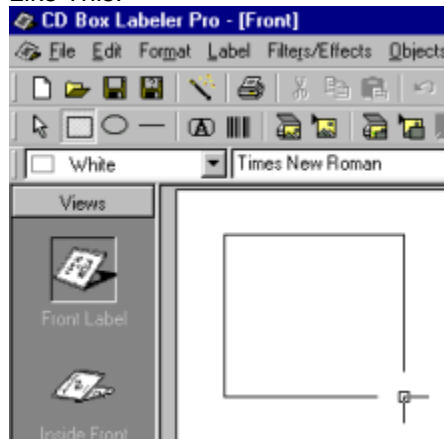
## How To Draw An Box, Line or Circle

1. Select one of these buttons in the ToolBox 

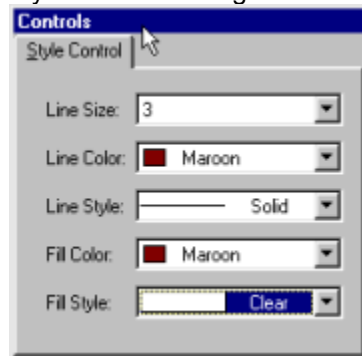


2. Draw the box/circle, line by holding the left mouse button and drag it.

Like This:



If you want to change line size, color, filstyle etc. simply select it in this box.




### NOTE!


This can be done on already created object, simply select the object and change the line size, color, fillstyle etc.

## How To Read A Music CD Using CDDB

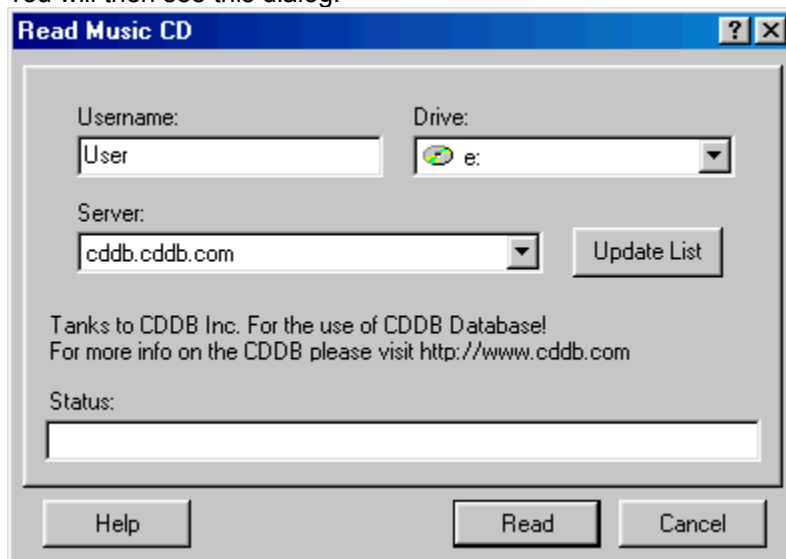
Read Music CD have two different read methods;

1. Automatic add Artist, Tracks & Song Names in the right places on every label
2. Read only Tracks & Song Names (in the open Text-Editor Layout) .

If you want to do the automatic read make sure you are in the Labels Layout (with the Text Editor Closed)

1. Press the Read Music CD options icon 

You will then see this dialog:



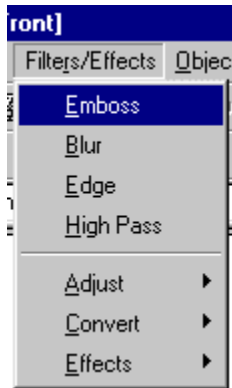
2. Insert a Music CD to read into a CD-Drive.
3. Close all other application accessing the CD.
4. Select the drive to read from.
5. Press the read button.

CD Box Labeler Pro will try to connect to the Internet and find a match, if a match is found it will automatic add both Artist Name, Tracks & Song Name to ALL the labels.


**NOTE!** If you only want to get the Tracks & Song Names into one(1)label open the Text-Editor Layout and follow the steps exactly as above!

## How To Rotate, Flip, Use Filters Images


CD Box Labeler Pro have several options to rotate, flip and use filters on background images.




### If you want to adjust an object:

1. Select the objects you want to adjust, press the arrow  and select the objects; either by dragging over all the pictures or selecting them by clicking on each of the pictures (Do not worry only pictures will be changed, textboxes, lines etc. will be ignored by the effect).
2. Select the effect in the "Filters/Effects" menu.

### If you want to adjust the background picture:

1. Deselect ALL objects (it can easy be done by pressing )
2. Select the effect in the "Filters/Effects" menu.

### Note!

If you are unhappy with the result, simply press the Undo button .

## How To Add A Barcode

To add a barcode to a label select Bar Code icon  and enter the options, the barcode will then be added to the label (it can easy be dragged where you want it).

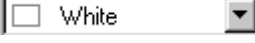

**Following barcodes are supported:**

EAN 8  
EAN 13  
Code11  
Codabar  
UPC\_A  
UPC\_E

## How To Change Background Color

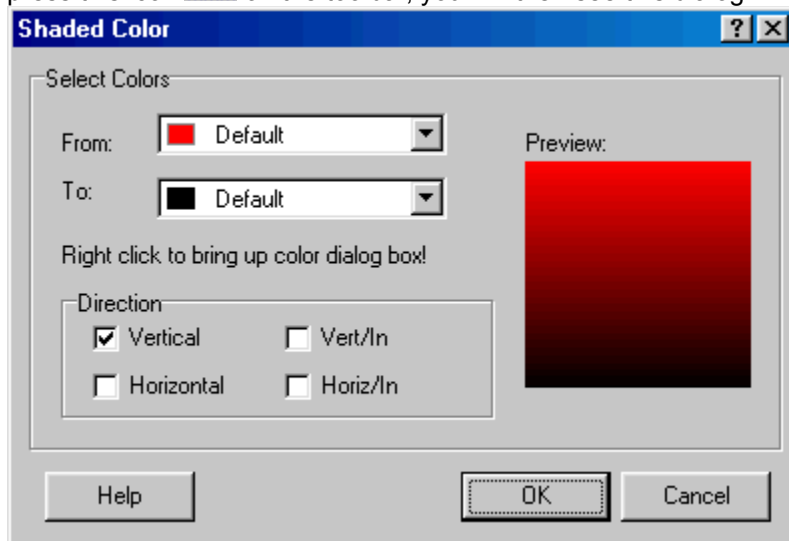
You can change background color in these ways:

### Solid Color:

Simply select a color in the Color Combo Box on the toolbar , or press this icon  on the toolbar and a dialog box will appear.

### Shaded Color(transient between two colors):

press this icon  on the toolbar, you will then see this dialog:




Select the From & To Colors to and the shade options.

### NOTE!

It may look a little strange on the monitor if you use lower resolution than 24-bit, but the printout are shaded correctly.

## How To Load Spine Images

Be sure that the Back Label Layout is enabled if not press the Back Label in the View-Navigation Bar.

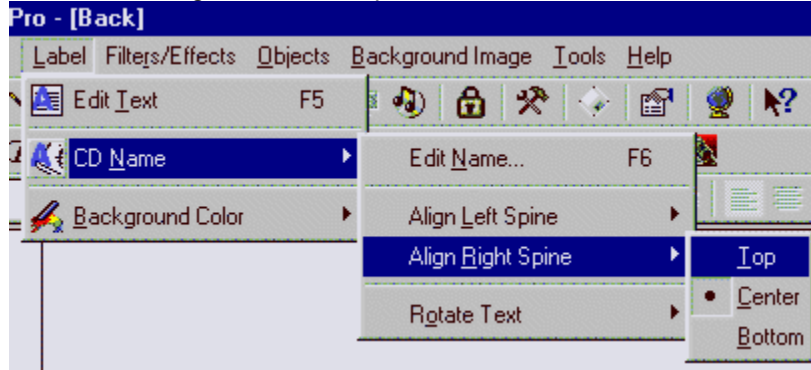
1. Press this icon in the tool bar 
2. Select the image and press open.



## How To Align The Spine Text (CD Name)

Be sure that the Back Label Layout is enabled if not press the Back Label in the View-Navigation Bar.

1. Select the alignment of the spine as this:



### Options:

Top: Aligns the text to the top

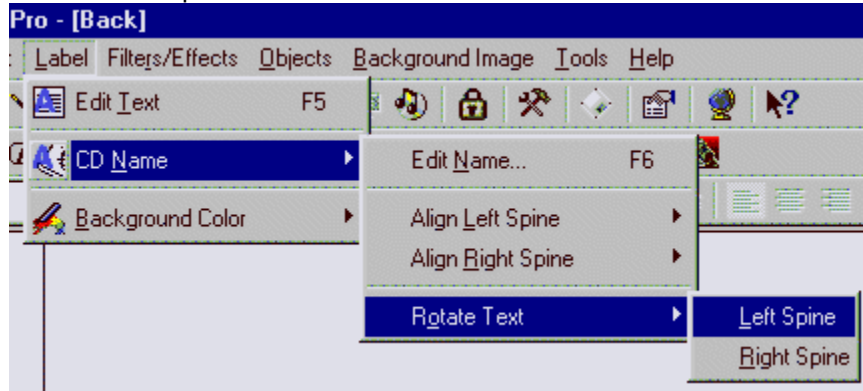
Center: Centers the text in the spine (default)

Bottom: Aligns the text then bottom

## How To Rotate The Spine Text (CD Name)



Be sure that the Back Label Layout is enabled if not press the Back Label in the View-Navigation Bar.

1. Rotate the spine as this:





## How To Move Objects Front/Back

### To move object front/back of another:

1. Select the object to move (make sure the arrow button is selected  )
2. Select the second object (hold down shift, both must be selected), to be moved in front of or back of
3. Click the button "Move Object Front Of" or "Move Object Back Of" 

Note! Make sure only (2)two objects are selected.

### To move object front/back of all other objects:

1. Select the object to move (make sure the arrow button is selected  )
2. Click the button "Move Object Front" or "Move Object Back" 

# Commands/Menu Description

## Shortcut Commands:

CTRL-N	New Project
CTRL-O	Open Project
CTRL-S	Save Project
CTRL-P	Print Project
CTRL-W	Start The Wizard
CTRL-Z	Undo
CTRL-X	Cut (text)
CTRL-C	Copy (text)
CTRL-V	Paste (text)
DEL	Delete
CTRL-A	Select All (text)
CTRL-F	Font Dialog
CTRL-B	Bold
CTRL-I	Italic
CTRL-U	Underline
CTRL-T	Strikethru
CTRL-L	Left Align
CTRL-E	Center
CTRL-R	Right Align
F5	Edit Text (Background Text)
F6	Edit Name (Spine text)
F7	Read Files
F8	Read Music CD
F9	Load Image (Object)
F10	Lock/Unlock Object
F1	Help

Note! All commands are not available at all times.

## Menu Commands Description:

### **File**

New	Start a new Project
Open Project	Open a Project
Save Project	Saves your Project
Save Project As	Saves your Project in a new name
Wizard	Start the Wizard
Print	Print your Project
Exit	Exit CD Box Labeler Pro

### **Edit**

Undo	Undo last changes
Cut	Cut selected text
Copy	Copy selected text

Paste	Paste text into Text Editor
Select All	Selects all text in the Text Editor

### **Format**

Font	Change the Font
Font Color	Change the Font/Background Color
Bold	Change the Font to <b>BOLD</b>
Italic	Change the Font to <i>ITALIC</i>
Underline	Change the Font to <u>UNDERLINE</u>
Strikethru	Change the Font to <del>STRIKETHRU</del>
Align Text	Aligns the Text
Bullets	Bullets Paragraph
Less Indent	Decrease Indent
More Indent	Decrease Indent

### **Label**

Edit Text	Edit the text on the label
CD Name	Options to edit CD Name, etc.
Background Color	Change Background Color

### **Filter/Effects**

Different filter & effects on images [more info!](#)

### **Objects**

Arrow	Selection Arrow(also unselects all objects)
Box	Draw Box
Ellipse/Circle	Draw Ellipse/Circle (hold CTRL for circle)
Line	Draw Line (hold CTRL for straight line)
Text Box	Insert Text Box
Bar Code	Insert Barcode
Import Image	Scan image into an image object
Load Image	Load Image object
Move Objects....	Settings to move objects below/front of each other
Lock/Unlock Object	Lock/Unlock position of selected objects
Delete Object	Delete Object (can also be done with DEL key)

### **Background Image**

Load Spines	Load Spine Images
Delete Spines	Delete Spine Images
Load Background	Load Background Image
Delete Background	Delete Background Image
Stretch Background	Stretch Background Image(only on Back Label)
Import Background	Scan Background Image

### **Tools**

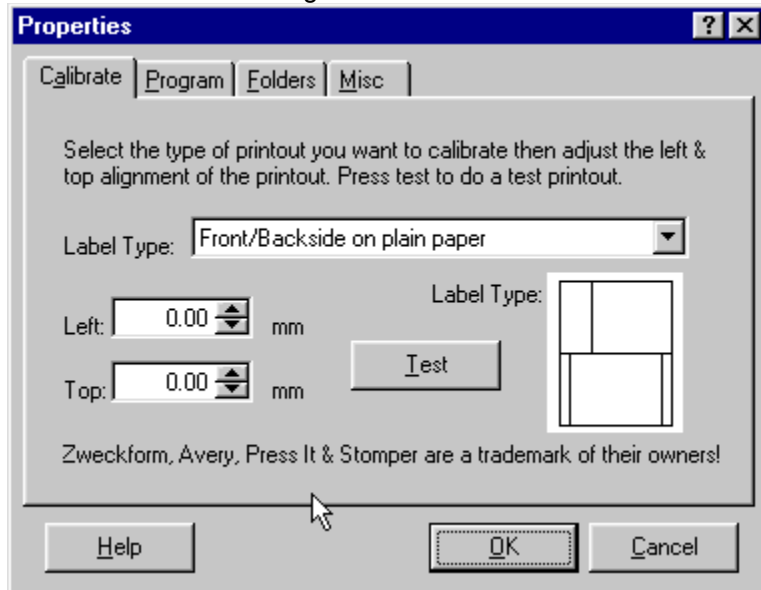
Read Files	Read contents of a Music CD.
Read Music CD	Read contents of a Music CD.
Floppy/Zip Label Tool	Open the Floppy/Zip Label Tool Dialog
Show/Hide Toolbox	Show/Hide Control Dialog
Set Options	Set the options for the program
AD Desktop Setup	Setup your interests & proxy settings on your computer

Note! All commands are not available at all times.

## How To Set Options

To set CD Box Labeler Pro options select "Set Options" in the tools menu.

You will see this dialog:



### Calibrate Printer Tab:

This is the most important options to select. You must calibrate the printout so it will print correctly on your printer. 1. Select the label to calibrate and press TEST, if the printout is not correctly (lines are cutted etc.) calibrate the Left and Top properties and test again until the labels is printed correctly. Do this on ALL labels you plan to print to.

### Program Tab:

Default program options like:  
Default Font & Size  
Load Background Pictures Using Aspect Ratio  
Hide Font Preview  
Enable/Disable Ballon Help

### Folders Tab:

Default Image & Project Folders

### Misc. Tab:

Select if you want to enable compression on project files & the copression ratio.

**Note!** This option is not recommended on slow computers.

## New Project

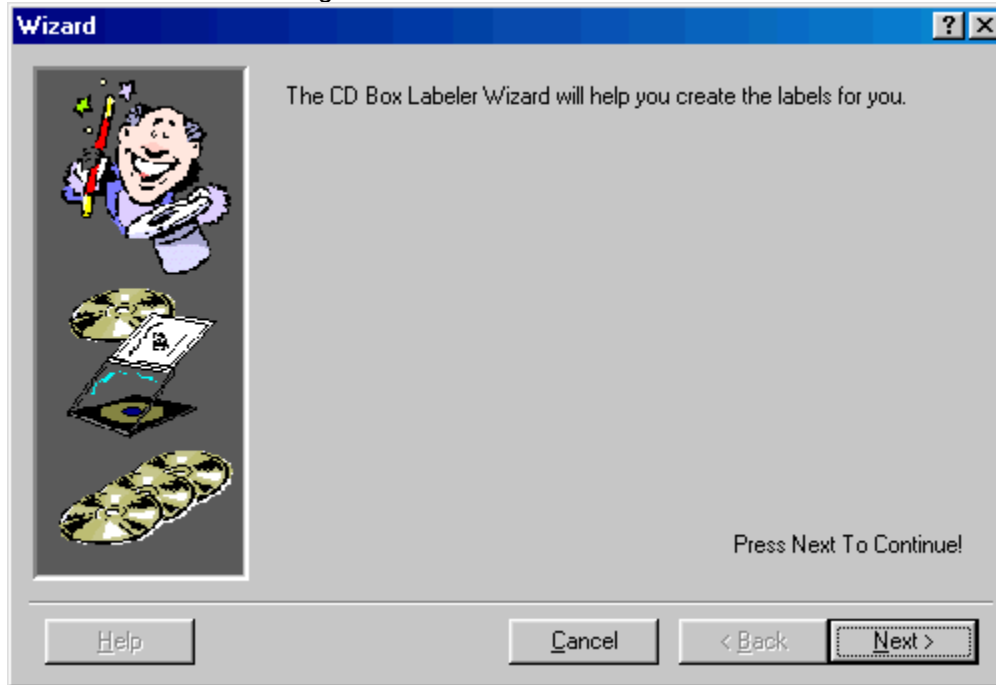
To start a new project.

1. Simply press the New Project Button 

## Wizard

Press the wizard icon on the toolbar to open the wizard dialog 

You will then see this dialog:

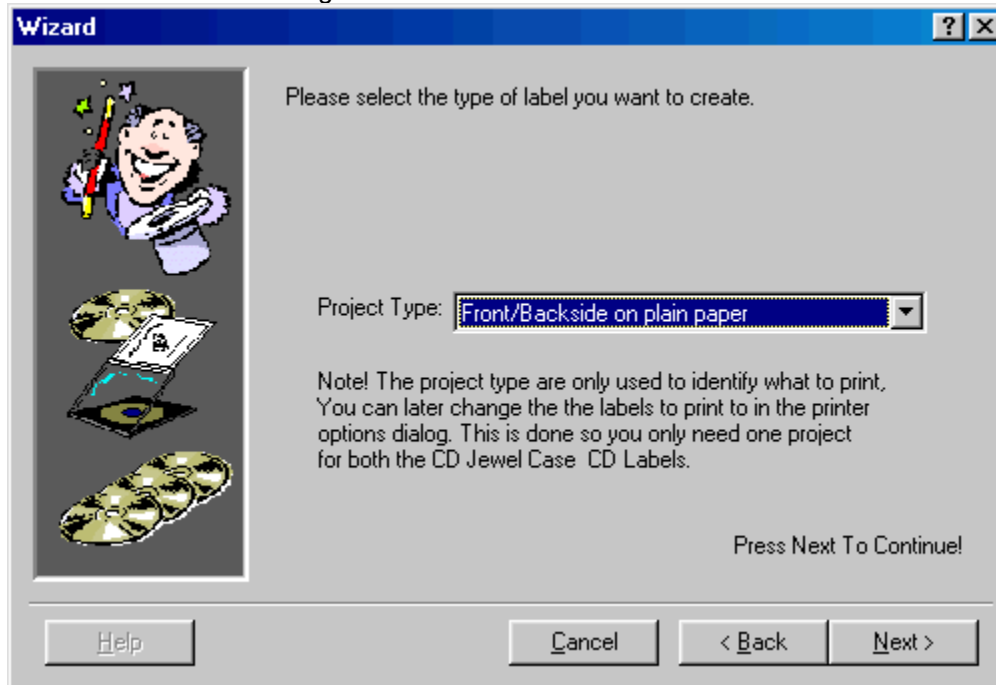


Press [next](#) to continue



## Wizard

You will then see this dialog

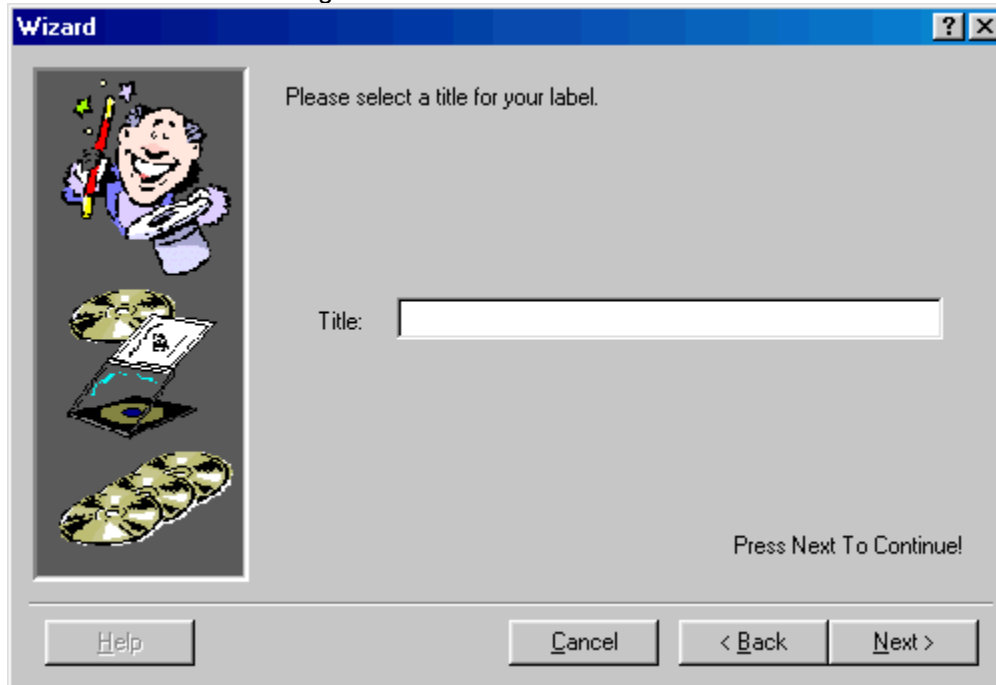


Select the project type you want to make (this is only the labels to print to, like Front/Back on plain paper or a Premade label like Stomper. You can later change the label to print to in the Printer Options).

Press next to continue

## Wizard

You will then see this dialog

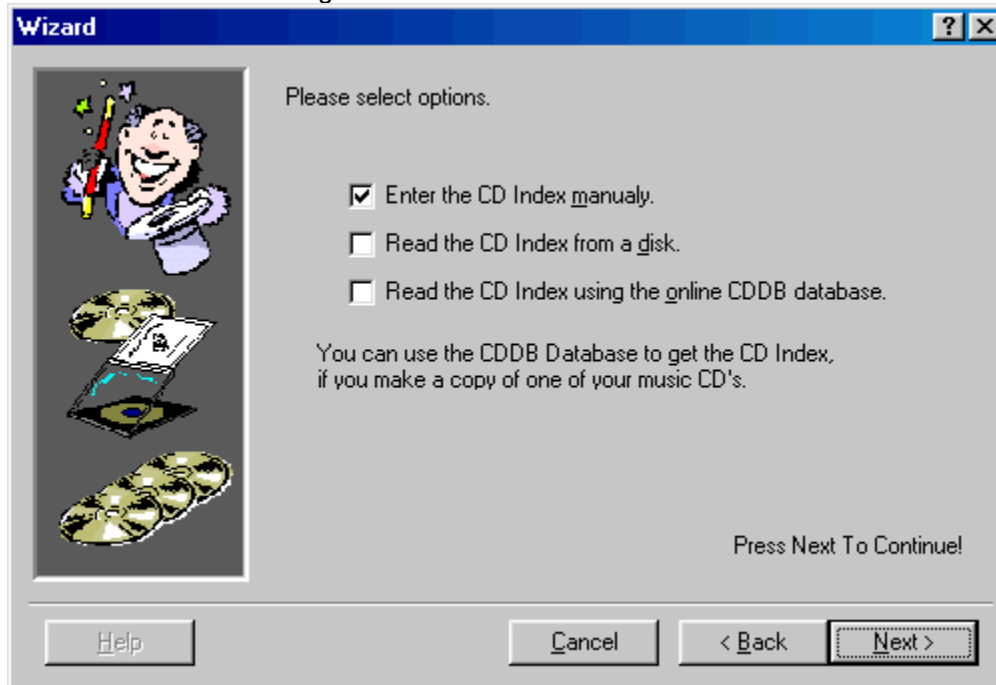


Enter the Title of the CD like: My CD

Press next to continue

## Wizard

You will then see this dialog

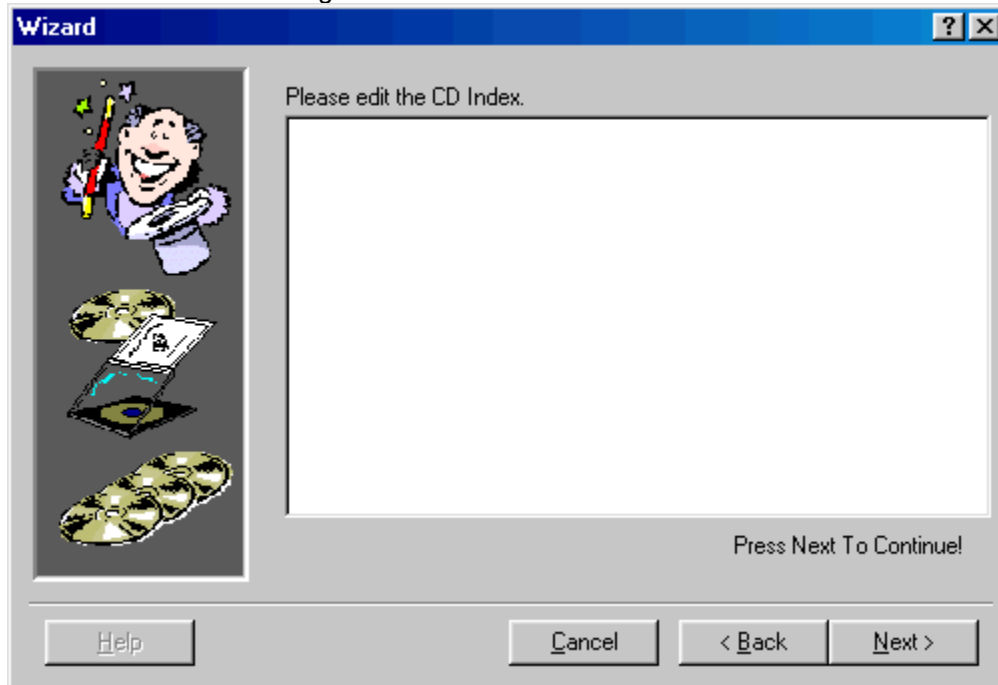


Select the option to enter the index, if you want to automatic add the index using [Read Disk](#) or [Read Music CD](#) look in the help on how to do this.

Press [next](#) to continue

## Wizard

You will then see this dialog

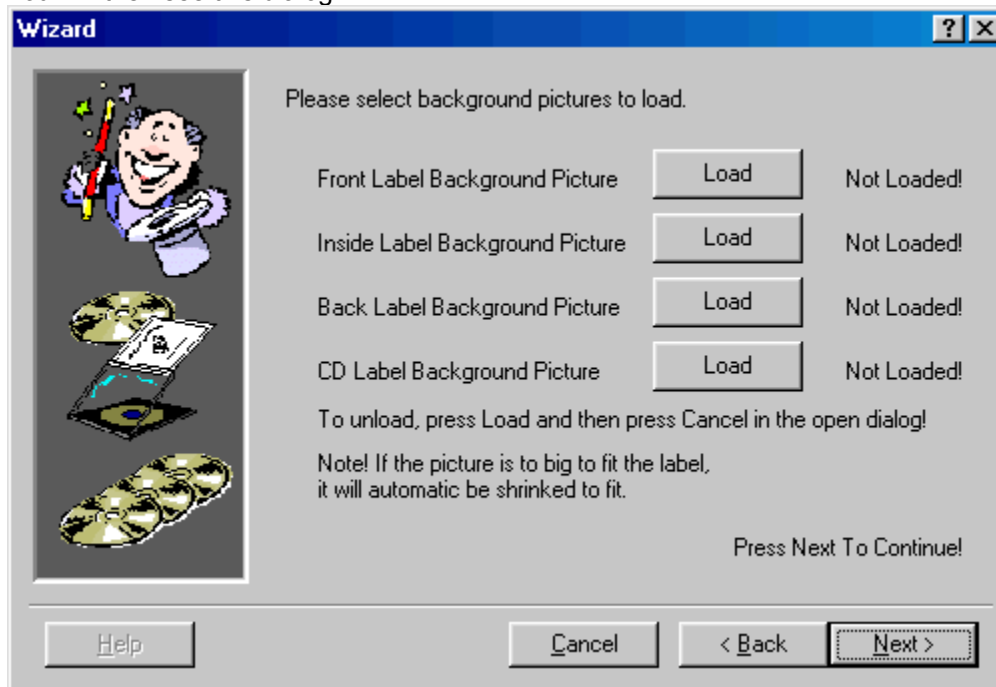


Edit the index to suit your needs

Press next to continue

## Wizard

You will then see this dialog



Select the Background Images you want to load.

Press [next](#) to continue

## Wizard

You will then see this dialog



Select the Background Colors.

Press next to continue

## Wizard

You will then see this dialog



Press Finish to exit the Wizard and make the label.

## There's no support for my label

Please [Click Here](#) for more info!



## No flat toolbars or buttons

This happens if you have comctl32.dll version lower than 4.70 in your system folder. Please install Internet Explorer 4 or higher, or simply download the comctl32 update

[Click Here Do Download Comctl32 Update](#)

## Other F.A.Q

Please visit [www.gpssoftuk.com](http://www.gpssoftuk.com)

## **New Project**

Starts a new project.

## Open Project

Open a previous saved project.

## Save Project

Saves the project.

## Save Project As

Save Project. A Save Dialog box will appear where you can enter the project's name.

## Wizard

Open the wizard.

## **Print Project**

Print your project.



## Cut

Cut's the selected text to the clipboard.

## Copy

Copy the selected text to the clipboard.

## Paste

Paste the contents from the clipboard.

## Undo

Undo last changes.

## **Scan Background Image**

Use a TWAIN-Compatible scanner to scan a Background Image.

## Load Spine Image

Load a Image into the Spines. NOTE! This will load picture into both spines, to load into one spine use the pulldown menus.

## Delete Spine Image

Delete Images On Both Spines.

## Load Background Image

Load a Background Image.



## Delete Background Image

Delete Background Image.

## **Stretch Background Image**

Stretch the Background Image (Only The Back-Label Image).

## Edit Text

Open The Text Editor.

## **Edit CD Name**

Edit the name of the CD (the text in the spines).

## Read Files

Read Files On A Disk.

## **Read Music CD**

Read a Music CD Using CDDB Internet Database.

## **Visit Home Page**

Visit Green Point Software UK Ltd homepage at [www.gpssoftuk.com](http://www.gpssoftuk.com). The place to look for updates.

## **Set Options**

Set Program Options.



# What Is?

You Are Using It Now!

## Color Combo

Selects Background or Font Color depends if the Text Editor or Layout is displayed. Note if you use shaded color on the background then will the color be changed to a solid color.

## Font

Selects Font.

## Font Size

Select Font Size.

## Font Bold

Change The Font To Bold.

## Font Italic

Change The Font To Italic.

## Font Underline

Change The Font To Underline.

## Font Strikethru

Change The Font To Strikethru.



## **Left, Center, Right Align**

Aligns the text.

## **Bullets**

Use Bullets Baragraph.

## Decrease Indent

Decrease Indent.

## Increase Indent

Increase Indent.

## Background Color

Change Background Color.

## Font Color

Change Font Color.

## Update Server List

Connects To cddb.com And Updates The Server List.

## Change Drive

Drive To Read From.



## Server List

Server To Use When Connecting To The CDDB Database.

## **E-Mail**

Enter Your E-Mail Address To Identify You On The CDDB Server.

## Change Folder

Change Folder.

## Filters

Read Filter(\*.exe reads only files ending with exe) multiple filters are typed with a semicolon between each filter (\*.exe;\*.doc).

# Read

Start The Read Process.

**Cancel**

Cancel The Operation.

## Help

Show The Help File.

## List In Columns

List Files In Columns!



## **Text Lower Case**

Convert Text To Lower Case!

## **Text Upper Case**

Convert Text To Upper Case!

**Back**

Step Back.

**Next**

Step Forward.

## Background Color

Select Background Color.

## Load Background Image

Load background Image.

## **Edit Index**

Edit The Index Of The CD.

# Enter The CD Index Manually

Enter The CD Index Your Self.



## **Read The Index From A Disk**

Read Automatic From A Disk.

## **Read The CD Index Using The Cddb Database**

Reads the index of a Music CD using a online database from internet (works only on copies or originals of comercial music CD's). You can still edit the index later.

**Enter Title**

Enter The Title Of The CD Here.

## Show Wizard At Startup

Automatic Show Wizard On Startup.

## **Default Font**

Default Font To Be Used When You Start A New Project.

## **Default Font Size**

Default Font Size To Be Used When You Start A New Project.

## Keep Aspect Ratio

Resize Using Aspect Ratio When Loading Background Images.

**OK**

Accept And Close The Dialog.



## **Media Type To Calibrate**

Select The Media Type To Calibrate Using Your Printer.

# Test

Print A Test Printout.

## Left/Top Alignment

Align Left & Top Alignment Of The Printout.

## Font

Select Font, Size, Color & Style.

## Direction

Direction Of The Shade.

**From Color**  
Select From Color.

**To Color**  
Select To Color.

## **Antialias**

Use Antialias When Rotating.



# Angle

The Angle Of The Rotation.

## Preview

Preview Of The Result.

**Value**  
The Value.

**Code**  
The Code.

# Type

The Barcode Type.

**Open**

Open Tthe File.

## Use Preview

Enable/Disable The Preview.

## Select Image Type

Select Images Types To Be Displayed.



# Drive

Change Drive.

## File List

Select The File.

**Go Up**  
Go Up One Level.

## **Make Folder**

Make A New Folder.

## Show As Icons

Display As Icon Style.

## Show As Report

Display As Report Style.

## Fit Image

Fit Image In The Preview Window

## Angle Sample

Sample Of the Angel Output.



## **Text Box**

Enter The Text Here.

# Angle

**Print To**  
Label To Print To.

**Close**

Close The Dialog.

## Hide Front Preview

Hides The Font Preview In Font Drop Down Boxes.

## Color

Select Color

## Project Folder

Default Project Folder (Open/Save)

## Image Folder

Default Image Folder (Load).



## **Compress Files**

Enable To Compress Save Files (May Slow Down Slow Computers).

## **Compression Level**

Compression Level To Be Used (Higher = More).

## Lock/Unlock Objects

Lock/Unlock Selected Objects.

# Show/Hide Control Dialog

Show/Hide Control Dialog

## Floppy/Zip Label Tool

Open Floppy/Zip Label Tool Dialog.

## **Selection Arrow**

Use This To Select Object (Can Also Be Used To Unselect All Objects).

## Draw Box

Draw An Box Object

## **Draw Ellipse/Circle**

Draw An Ellipse Or Circle Object (Hold Down CTRL For Circle).



## Draw Line

Draw An Line Object (Hold Down CTRL For Straight Line).

## **Text Box**

Draw An Text-Box Object.

## Bar Code

Draw An Bar Code Object

## **Move Object Front Of**

Moves the first selected object in front of the second selected object.

## **Move Object Front**

Move object front of all other objects.

## **Move Object Back Of**

Moves the first selected object in back of the second selected object.

## **Move Object Back**

Move object back of all other objects

## Scan Image

Scan Image Into An Object.



## Load Image

Load Image Into An Object.

## Scan Background Image

Scan Background Image.

## Load Background Image

Load Background Image.

## Delete Background Image

Delete Background Image

## **Stretch Background Image**

Stretch Background Image Over The Spines(Back Label).

## Load Spine Images

Load Image Into The Spines.

## Delete Spine Images

Delete Spine Images

## **Edit Text**

Open Rich Edit Text Editor (Background Text).



## Edit CD-Name

Edit CD-Name.

## Solid Background Color

Select A Solid Background Color.

## Shaded Background Color

Select A Shaded Background Color.

